



# CathexisVision 2022

## Archiving App-note

### (CathexisVision Archive Player)

# Contents

- 1. Introduction..... 3
- 2. Archiving Video in CathesisVision ..... 4
  - 2.1 Review and Select Video..... 4
  - 2.2 Archiving from Live/Review..... 7
- 3. Archive Viewer – Launch in CathesisVision ..... 10
  - 3.1 Open the Archive Viewer..... 10
  - 3.2 Archive Viewer Interface ..... 10
  - 3.3 Export Archive ..... 14
  - 3.4 Archive Security ..... 15
- 4. Conclusion ..... 17

While Cathesis has made every effort to ensure the accuracy of this document, there is no guarantee of accuracy, neither explicit nor implied. Specifications are subject to change without notice.

## 1. Introduction

This is a guide to archiving in CathesisVision.

Archiving is a facility that enables operators to select recordings and copy them to archiving media, such as a hard drive or USB. Archived recordings retain their authenticity, and can be verified as authentic (unaltered) on replay, making them suitable for use as forensic evidence.

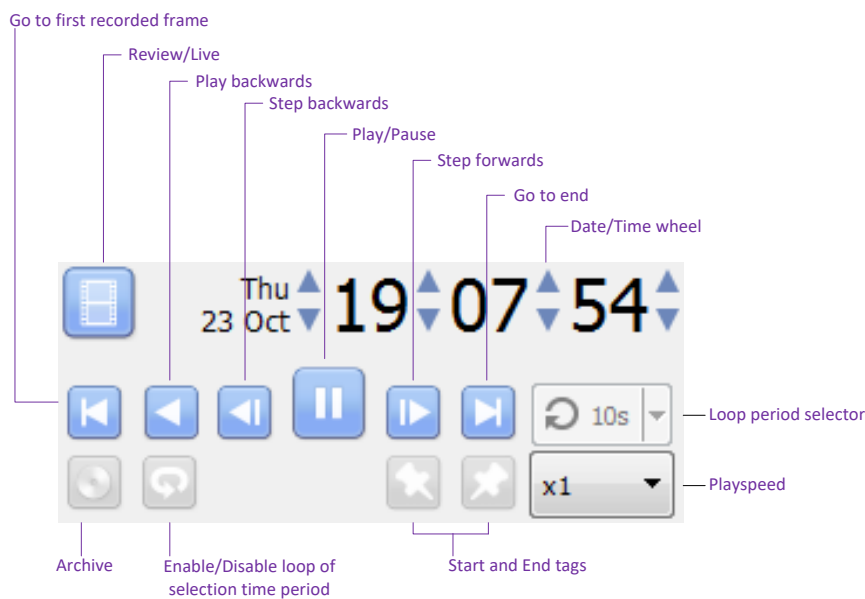
**Note:** for more information about the operation of CathesisVision, refer to the *CathesisVision Operator's Manual*.

## 2. Archiving Video in CathesisVision



### 2.1 Review and Select Video

In order to create an archive, video needs to be reviewed and sections of it need to be selected for archiving. This section will deal with reviewing and selecting video for archive in CathesisVision. There are two areas of the interface that are used to review recorded footage. The Review Control Panel, and the Timeline.

#### 2.1.1 Review Control Panel

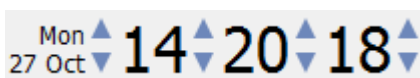


**Note:**

-  Click on this icon to enable review. It will change to the running-man icon.
-  Click on this icon to return to live view.

#### 2.1.1.1 To Review Footage from a Certain Date

##### Using the Time/Date Wheel



To go to a specific date, select the camera/s to review. Click on the arrows of the Date/Time wheel until settling on the correct date/time.



##### Using the Timeline

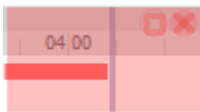
To move to a date and time, using the timeline simply left-click and hold anywhere on the timeline, and drag the timeline to the desired time/date.

### 2.1.1.2 Selecting a Period for Review

After finding something of interest, the operator may wish to loop through the recorded footage around that event. (This can also be useful when selecting footage for archive).



Start by using the using the Date/Time wheel, to navigate to the desired beginning point.

-  Click on this icon to tag the **start** of the selection. Then navigate to the end of the desired period.
-  Click on this icon to tag the **end** of the selection.



The selected areas will appear, as shown in the image on the left. By default, it will be set to loop.

This can be seen when looking at the loop icon

-  This icon means that it will loop, to the beginning of the selection, as it gets to the end of the selection.
-  This icon means that the video will continue to play past the end of the selection.

## 2.1.2 Timeline

The timeline at the bottom of the GUI indicates where in time the currently selected cameras are.

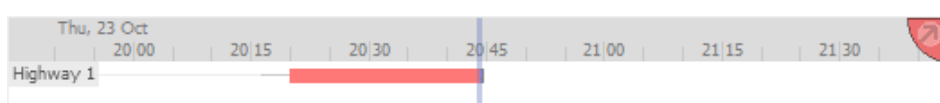
**Note:** While legacy video (recordings made on pre-2015 systems) may be reviewed in CathesisVision 2015 and onwards, the timeline will remain blank.

### 2.1.2.1 Live View Timeline

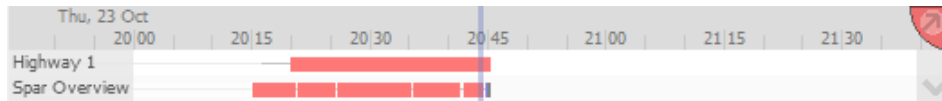


The live view timeline simply show the current time at the intersection between white and grey.

### 2.1.2.2 Single, and Multiple, Camera Review Timeline



When reviewing a camera's recorded video, the timeline will change to show red blocks. These blocks on the timeline represent recorded events.



If multiple cameras have been selected to review, they will appear stacked on the timeline.

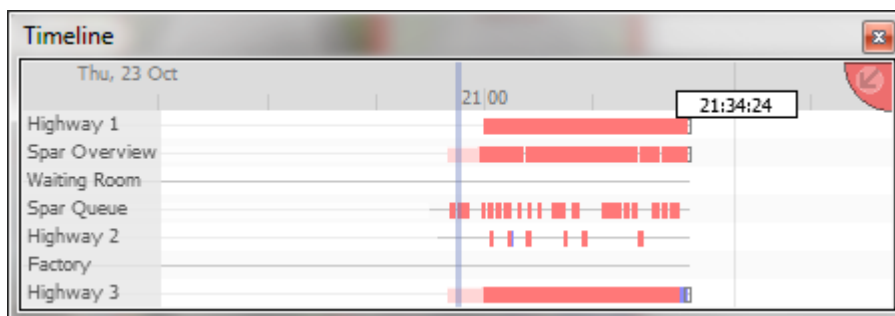
**Note:** Although multiple cameras may be selected for review, if the timeline is docked only two will be visible at one time.

▼ To cycle between them, click on this icon at the bottom right of the timeline.

To view more than two cameras simultaneously without needing to cycle through them, detach the timeline. See below.

### 2.1.2.3 Detached Review Timeline

The detached review timeline allows review of more than two cameras at a time.



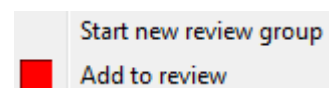
↶ To detach the timeline from the GUI, click on this icon, at the top right of the timeline.

↷ To reattach the timeline, click on this icon, in the same place.

### 2.1.2.4 Synchronised/Independent Review

By default, all reviews are synchronised, when multiple cameras have been selected for review. It is possible to review cameras independently.

When already reviewing a camera, middle-click on a camera's panel to see the following options in the context menu.



**Start new review group** will add this camera to a separate group of review cameras, which will be asynchronous to the original review group. The new review group is indicated by the tag on the top-right of the video. Each review group will get its own colour.

**Add to review** will add this camera to the already existing review group. As review groups are added, the number of options here will increase as a result.

### 2.1.2.5 Timeline Actions

#### Zoom in on Timeline

There are two ways to zoom in on a section of the timeline.

- By mousing over the timeline (during review) and rolling the mouse-wheel forwards. To zoom out roll it backwards.
- But shift-selecting a section of the time line.



This is done by holding down the SHIFT key, while click-dragging the selection with the left mouse button. The selection will look like the image to the left.

To **zoom in** on this selection, click on this icon: 

#### Move the Timeline with the Mouse

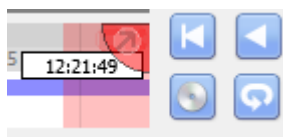
Move backwards and forwards in time by left-click dragging the timeline to the left or right.

## 2.2 Archiving from Live/Review

### Special Notes:


- A NetBSD GUI will only be able to output legacy archive files.
- A NetBSD GUI is unable to archive video from a Windows/Linux NVR.
- A Windows/Linux GUI can only output new archive files, but will be able to archive video from a VR running any OS.
- Do not format, or configure, the newly inserted CD/DVD. Windows presents an option to configure the disk as CD/DVD, or drive. This must **not** be done!

### 2.2.1 Select Video to Archive




There are two ways to select the period to archive.

**Tagging:**  Click on this icon to tag the start of the selection.

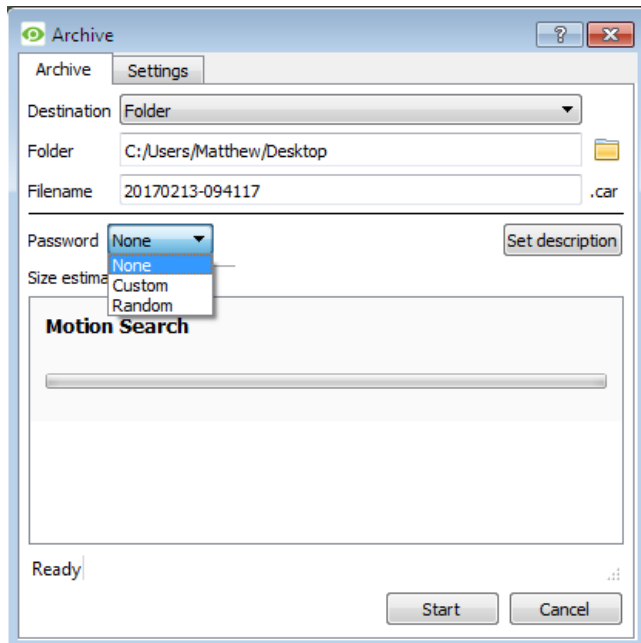
 Then navigate to the end of the desired period, and click on this icon, to tag the end of the selection.

**Shift-selection:** This is done by holding down the SHIFT key, while click-dragging the selection with the left mouse button.

 Click on this icon to start archiving the selection.

## 2.2.2 Apply Archive Settings

### 2.2.2.1 Archive Tab



Choose the **Folder** to which to archive. Select a **subfolder** for this specific archive. The default folder name will be the current date, but it can be renamed to something more descriptive.

The **filename** may be defined manually.

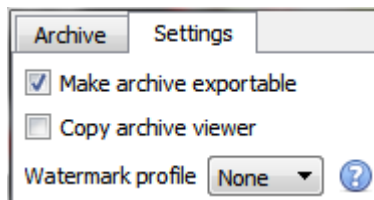
Add a **Password**, if desired.

A **Size estimate** of the archive is provided.

Click on **Set description** to give this specific archive a title.

Click on **Start** to archive the selection with these settings.

### 2.2.2.2 Settings Tab



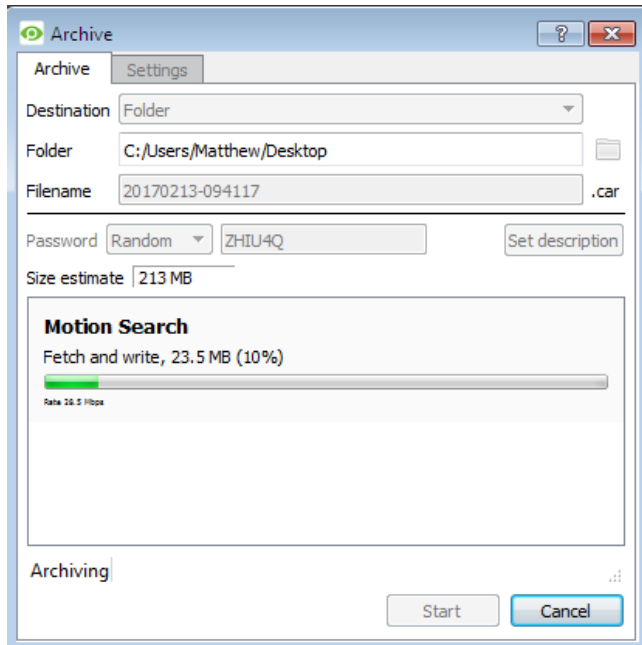
Check or uncheck the box to make archives exportable or not exportable.

Use the **Copy archive viewer** option when the archive will be viewed on a computer that does not have the CathexisVision interface installed.

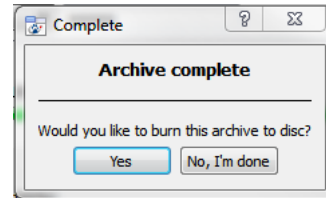
**Note:** The option to setup **Watermark profiles** is configured in **Setup Tab / General Site Setup / Configure archiving**. This setting is controlled by the administrator of the Site.



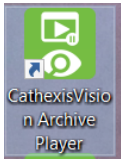
### 2.2.2.3 Complete the Archive process



Once archiving is complete, a prompt will appear, providing the user with the option to immediately burn this archive to disk:



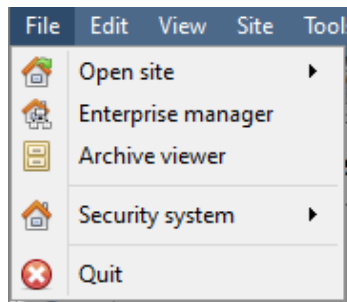
### 3. Archive Player – Launch in CathesisVision



Archives can be reviewed from within the CathesisVision interface, or in the original CathesisVision Archive Player standalone application.

#### 3.1 Open the Archive Player/Viewer

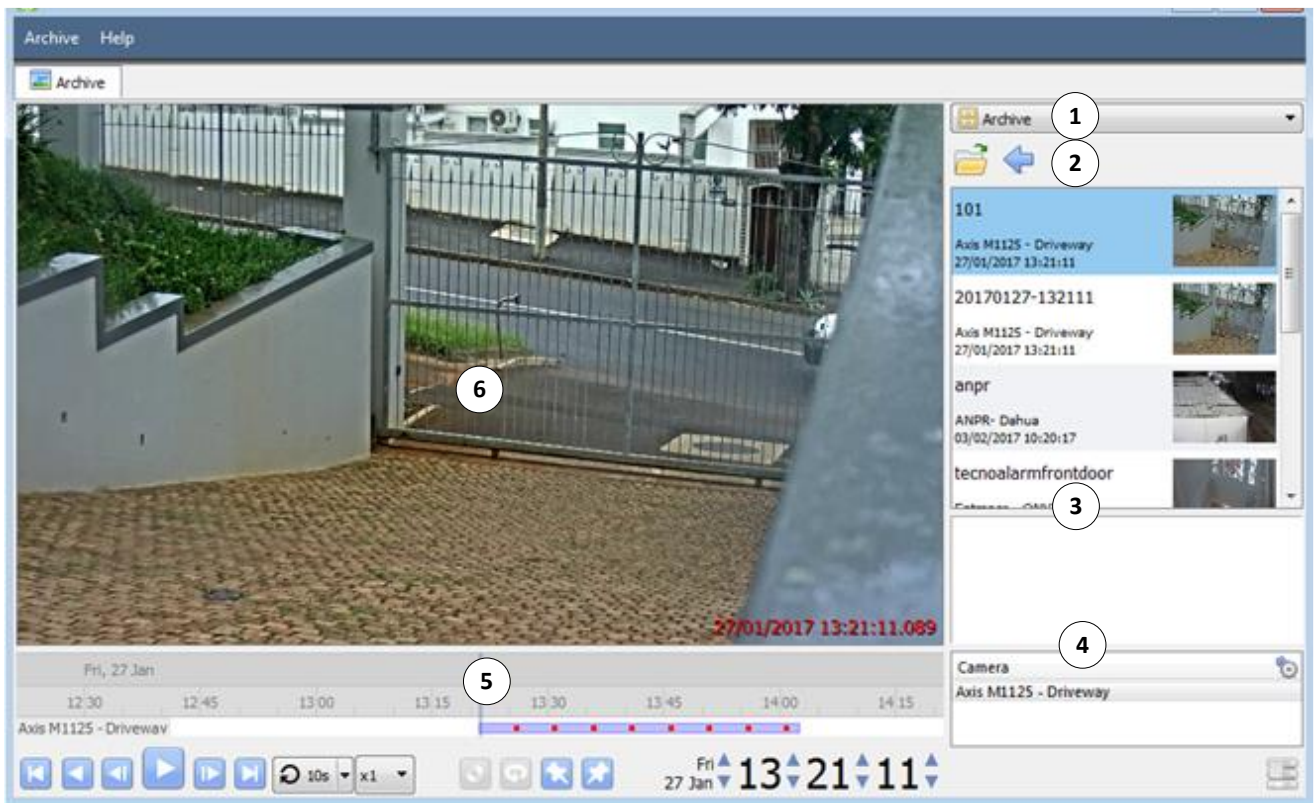
Archive Viewer



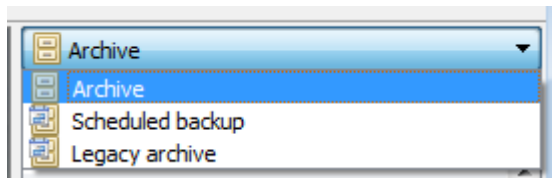
Open the CathesisVision GUI, and select **File Menu / Archive viewer**.

#### 3.2 Archive Player/Viewer Interface

This section details the interface of the Archive Viewer and the processes that are performed.



## 1 Type Selection



From this drop-down menu, select the type of archive to view.

## 2 Folder Navigation and Archive File List

Navigate folders on the computer containing archive files in order to find and view them.



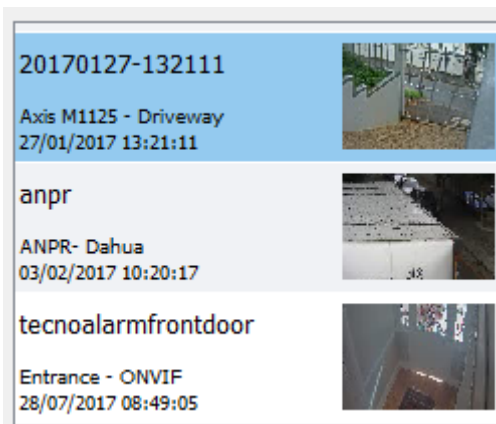
Click to browse folders in dialog window.

Click to go back to previous folder.

Once the folder containing the archive is selected/opened, all appropriate archive files will be populated in the archive file list.

**Note:** Individual archive files will not be visible when searching through folders. Archive files are only visible in the archive file list, once the general folder containing the archive files has been selected.

### File Information

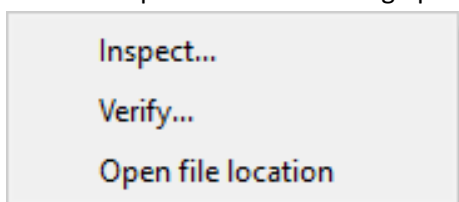


The archive file list displays information about the archives in the selected folder. This information includes:

- Archive file name.
  - Where no name is given at time of archive, date of archive is used instead.
- Name of camera from which archive originated.
- Date and time of archive.

### Right-Click Options

Right-clicking on an archive in the archive file list will present the following options:

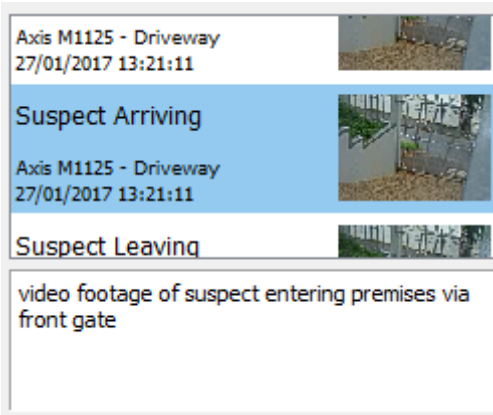


**Inspect** will display the meta-information of the archive. See the Archive Security section.

**Verify** will confirm whether the archive is authentic or not. See the Archive Security Section.

**Open file location** will open up the location of the selected archive file.

### 3 Description



If a description for the archive was set during the archive process, it will appear in the field beneath the archive file list when the relevant archive file is selected.

### 4 Archive Properties

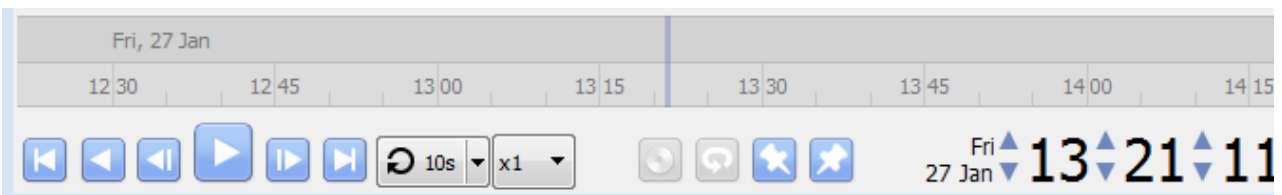
Camera	Start	End	
Axis M1125 - Driveway	20170127-132111	20170127-133905	

When an archive is selected, its properties will be listed in the Archive Properties field.

Column view may be changed by clicking on the icon.

### 5 Timeline Controls

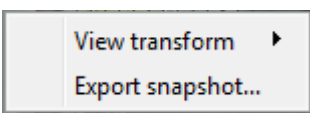
The timeline controls of the Archive interface are the same as those described in the **Cameras Tab** section, of this document. On the timeline itself, the blue line indicates an event/recorded video. The red dots indicate the point that an event was triggered.



### 6 Archive Camera Panel

The selected archive will be available to view from within the camera panel.

#### Right-Click Options

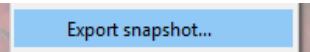


Select View Transform to transform the video.

Select Export snapshot to export a snapshot from the archived video. See below.

## Export Snapshot

When reviewing archived video, video snapshots may be exported.

Right-click on the image and select .

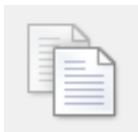
This will bring up the **Export snapshot** window, which presents the following options:



Print snapshot.



Save snapshot to folder.



Copy to system clipboard.

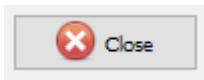


Copy to Cathexis clipboard.

Overlay camera name  
 Overlay time

This will overlay the name of the camera in the top-left corner of the camera image.

This will overlay the time of the recording in the bottom-right corner of the camera



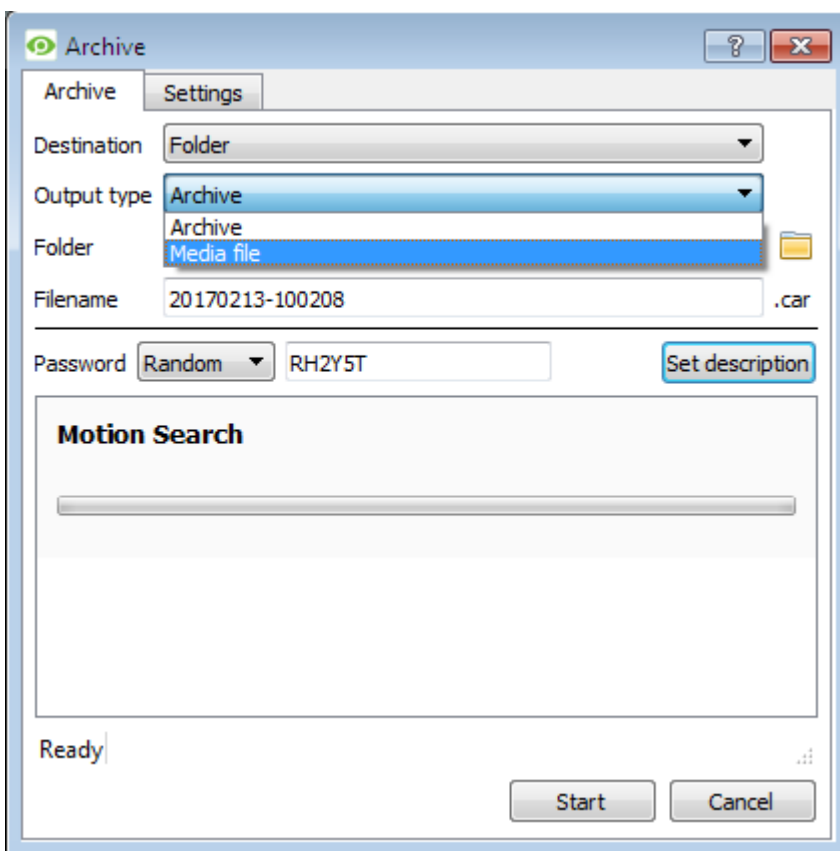
Click once the snapshot has been exported.

### 3.3 Export Archive

Archives, or a selection of an archive, may be exported either as another archive, or as a media file. Follow the same procedures to select period of video to archive and apply the archive settings as outlined in **Section 3. Archiving Video**.

**Please note:**

Sub-archives (archives of archives) do not contain any signatures generated by the original NVR that sourced the video data. The authenticity of these archives cannot be verified by Cathesis.



When exporting an archive, there is an additional **Output type** setting selection.

To export the video as a media file, click on the dropdown menu for **Output Type**, and select **Media file**.

### 3.4 Archive Security

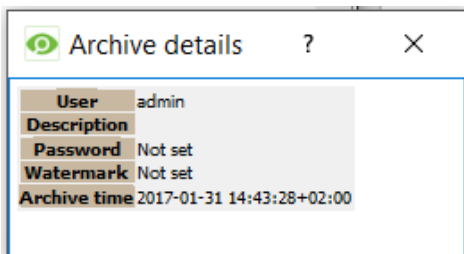
CathesisVision includes the following measures to ensure archive security:

- The overall signature of the archive is retained, linking it to the source NVR.
- Critical portions of video/audio can be independently signed and explicitly linked to the source NVR.
- Clients sourcing data from an NVR for archive are audit logged.
- Archives can be encrypted with a password during archiving process.
- Watermarks can be embedded in archive during archiving process.
- Archives can be inspected to reveal archive meta-data.
- Archives can be verified in order to determine the authenticity of an archive.

This section demonstrates how to inspect the meta-data of an archive, and how to verify the authenticity of an archive.

#### 3.4.1 Inspect Archive

To inspect an archive for its meta-information, right-click on the archive in the archive file list and select Inspect. This will bring up the window below:



- User** User will display the username of the operator who performed the archive.
- Description** Description will show the description of the archive (if set).
- Password** Password will show Encrypted if a password is set, and Not set if not.
- Watermark** Watermark will show the watermark of the archive (if set).

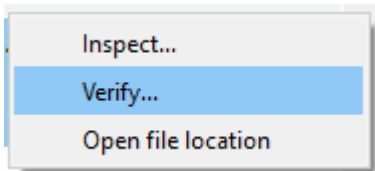
#### 3.4.2 Verify Archive

CathesisVision 2017 has introduced a verification feature which provides a report on the authenticity of an archive for security reasons. Archives may be verified from the archive viewer in CathesisVision or from within the CathesisVision Archive Player.

Should there be a query regarding the verification, operators may copy the verification result and email it to Cathesis support for help.

**Please note:**

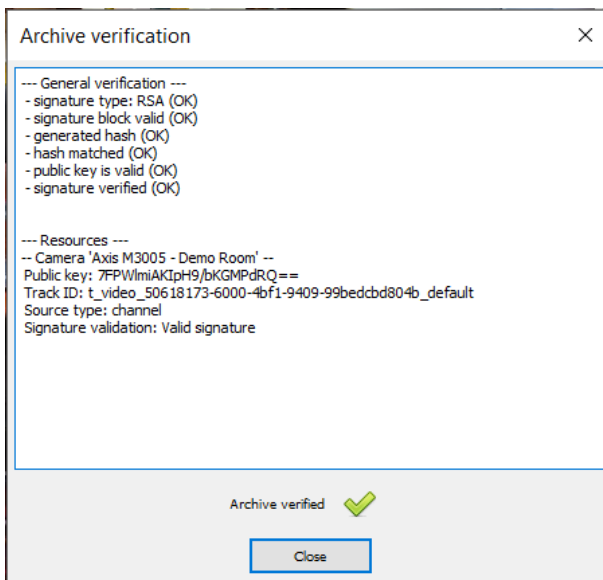
Sub-archives (archives of archives) do not contain any signatures generated by the original NVR that sourced the video data. The authenticity of these archives cannot be verified by Cathexis.



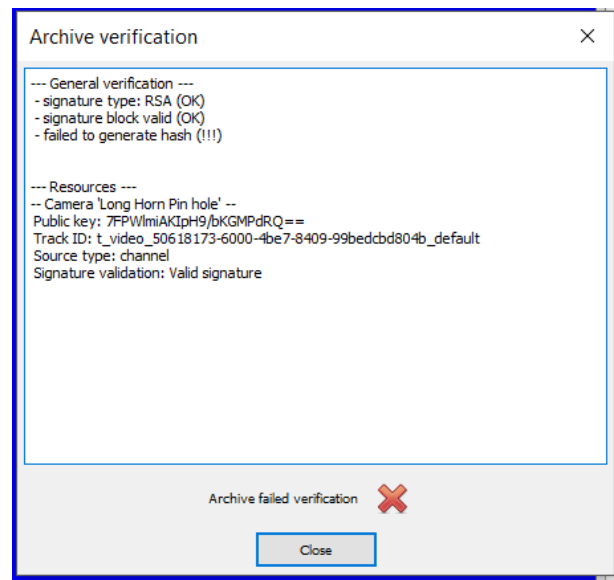
Once the file location of the archive has been opened, right-click on the relevant archive. Select **Verify**.

The software will then determine whether or not the archive is authentic by indicating an archive as **Archive Verified** or **Archive failed** verification.

**Archive Verified**



**Archive Verification Failed**



**Note:** Archive verification reports may be copied and emailed to support@cat.co.za.



## 4. Conclusion

**Note:** this app-note was designed to deal specifically with the archiving feature in CathesisVision.

For further information about the CathesisVision software, please consult the *CathesisVision Setup Manual* (<http://cathesisvideo.com/>).

For support, please contact [support@cat.co.za](mailto:support@cat.co.za)

**Note:** When archiving a video stream which has **Privacy Zones**, the archive file will have the zones included only if the feed is set to “Show privacy zones” at the time of archiving.

### USEFUL LINKS

To view **tutorial videos** on CathesisVision setup, visit <https://cathesisvideo.com/resources/videos>

Find answers to Cathesis **Frequently Asked Questions**: <https://cathesis.crisp.help/en/?1557129162258>